

MicroMet® Plus

Met One Instruments MicroMet Plus Software for Windows® is a complete package for collecting, displaying, and reporting meteorological data. MicroMet Plus takes maximum advantage of your datalogger technology without the user having to learn a variety of meaningless commands. MicroMet Plus works with any of the Met One Instruments MicroMet or AutoMet® Dataloggers as well as the Campbell CR-10 and CR-10x.

- Windows® Graphic Interface
- Charts, Graphs and Reports
- Wind Rose Charts
- Database Editor
- Auto Polling—999 Remote Sites
- Foreign languages
- Automatic Printed Reports

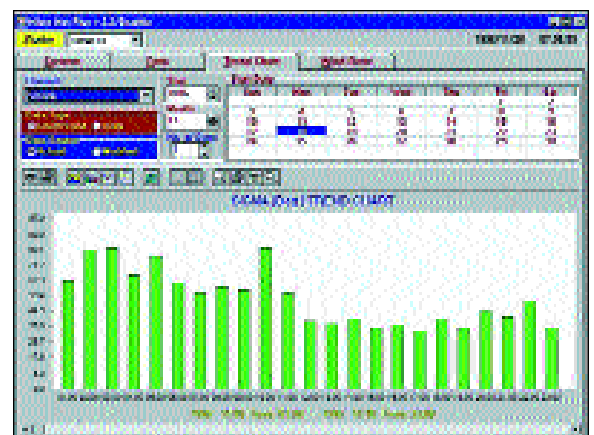
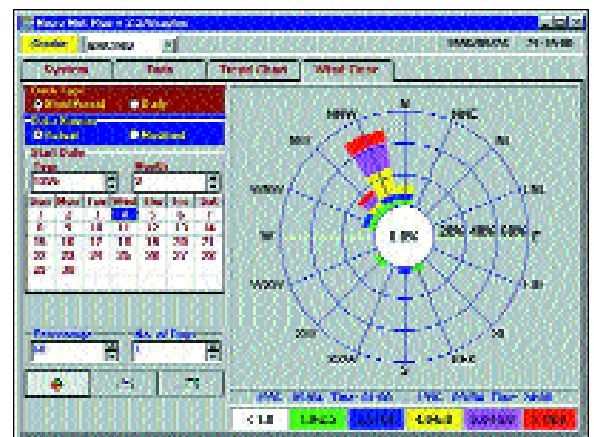
MicroMet Plus actively expands the data collection process to include automatic polling of up to 999 remote dataloggers. It can log data from each site, as well as prepare special printouts of each station. The print outs can be customized by the operator to include all or selected measurements. Each remote site's specific configuration is activated from a single disk-based initialization file. This INI file sets up the various input channels being used, as well as their location in the datalogger memory.

The graphics interface of the new MicroMet Plus Software

allows the operator to view the data in a number of formats. They include the normal tabular format, as well as in line graphs, bar graphs, or as a 3D style. These trend graphs appear on the local screen and can be printed to a Laser or ink jet Printer. Wind Rose charts indicating the frequency of winds in sixteen directions may be automatically calculated and displayed for a selected time period. Each data point can be selected to display as either actual data as recorded or as corrected data that has been changed to take care of lost or damaged records.

Data from each remote site is stored in a DBase™ style data file that can be exported to a number of different formats for any additional post processing of information.

The software can be used in a variety of configurations, the most common being from a centrally located PC where telephone lines provide connection to the remote loggers. If phone lines to some sites are not available, the data from the remote loggers can be brought in to the central PC using data storage modules. Alternately, the MicroMet Plus can be operated on a laptop, and the operator takes the computer out to each remote site and transfers data from the logger.



 Met One Instruments, Inc.

Corporate Sales & Service: 1600 Washington Boulevard, Grants Pass, Oregon 97526, Tel 541/471-7111, Fax 541/471-7116
Regional Sales & Service: 3206 Main Street, Suite 106, Rowlett, Texas 75088, Tel 972/412-4747, Fax 972/412-4716
<http://www.metone.com>

Revised June 13, 2001

MicroMet® Plus

Using a Met One Instruments set of spread spectrum net-working radios, data can be collected from multiple sites in a 20 or more mile radius of the central computer site. Distances are even farther if Met One Instruments Cellular Radio Modems are used.

MicroMet Plus crosses the language barrier by providing versions in not only English, but in Chinese, and now in Spanish. Non-English versions do require the Windows® operating system to be in the same language as the special language version of MicroMet Plus. In most cases, a special language keyboard is also required for easiest operation in the foreign language.

Minimum Hardware Requirements:

- 486 Computer with Windows 3.1
- 16 Megs Memory
- 20 Megs Hard Disk Space
- VGA or SVGA Monitor
- RS-232 Port or Internal Modem
- Printer Port and Printer
- Mouse or other Pointing Device

Platform Compatibility

Windows® 3.1, 95, 98, 2000, ME, and NT.

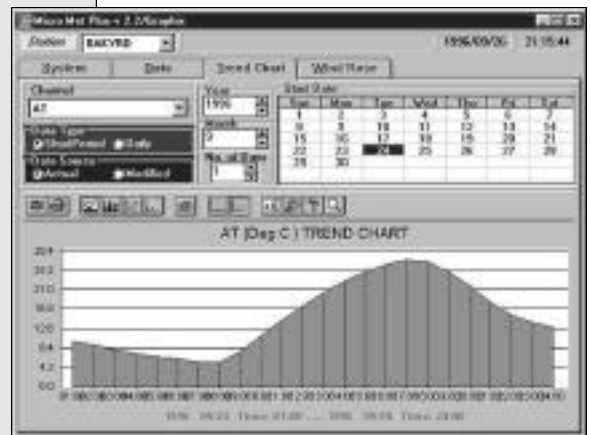
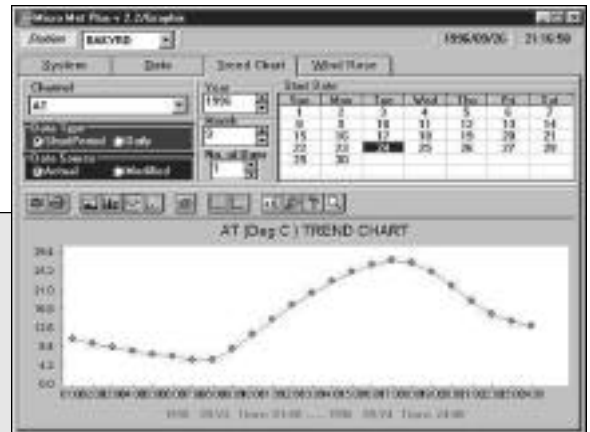
MicroMet is a registered trademark of Met One Instruments, Inc.
Windows and Windows 3.1, 95, 98, ME, and NT are trademarks of Microsoft Corporation
DBase is a trademark of Borland Corporation

A true Windows® interface with all the graphic features of operating in a windows environment.

Data can be displayed in a tabular format. Using the EDIT feature corrected value can be entered into the modified field. Original data that was recovered is not changed.

Trend charts can be easily viewed or printed directly from the graphic menu of MicroMet Plus.

Charts and graphics can be displayed in a number of different formats. This can include both 2D and 3D formats.



The screenshot shows a data table window with two columns of data. The left column has headers 'Ch', 'Date', 'Value', and 'Modify'. The right column has headers 'Ch', 'Date & Time', 'Value', and 'Modify'. The table contains 14 rows of data, with dates ranging from 1996/09/14 to 1996/09/26. The values in the 'Value' column range from 206.4 to 282.8.

Ch	Date	Value	Modify	Ch	Date & Time	Value	Modify
02	1996/09/14	206.4		02	1996/09/25 10:00	218.2	
02	1996/09/15	217.8		02	1996/09/25 15:00	226.0	
02	1996/09/16	219.9		02	1996/09/25 20:00	267.2	
02	1996/09/17	215.8		02	1996/09/25 21:00	3.6	
02	1996/09/18	228.8		02	1996/09/25 22:00	255.4	
02	1996/09/19	225.4		02	1996/09/25 23:00	252.5	
02	1996/09/20	208.2		02	1996/09/26 0:00	263.7	
02	1996/09/21	232.8		02	1996/09/26 01:00	262.1	
02	1996/09/22	248.8		02	1996/09/26 02:00	249.5	
02	1996/09/23	265.4		02	1996/09/26 03:00	225.2	
02	1996/09/24	284.8		02	1996/09/26 04:00	268.0	
02	1996/09/25	287.8		02	1996/09/26 05:00	233.5	
02	1996/09/26	282.8		02	1996/09/26 06:00	246.5	

 Met One Instruments, Inc.

Corporate Sales & Service: 1600 Washington Boulevard, Grants Pass, Oregon 97526, Tel 541/471-7111, Fax 541/471-7116
Regional Sales & Service: 3206 Main Street, Suite 106, Rowlett, Texas 75088, Tel 972/412-4747, Fax 972/412-4716
<http://www.metone.com>