

UHC-100W Sample Heat Controller



AMP-Cherokee's UHC-100W Umbilical Heat Controller is a wall mount unit for new and existing CEM systems. It's compact design is convenient for upgrades and/or replacement of failed units. Robust electrical design provides reliability for long service and accurate operation.

Standard units provide temperature control for a single source. Additional controllers (as shown above) for probe filter heaters or heated probes are available on sample systems with RTD or TC input sensors.

Additional displays can be included for stack temperature or other monitoring points, depending on your sampling design.

All AMP-Cherokee CEMS components are designed for OEM and replacement applications. For application information and ordering, please contact a Sales Engineer at [800.399.4236](tel:800.399.4236) or via email at sales@ampcherokee.com.

Specifications

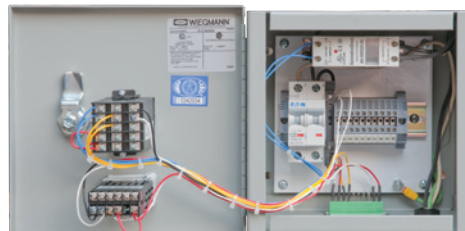
Controller	programmable to 600°F
Maximum Relay Load	25A
Input Sensor	RTD Or TC
Dimensions	3.5"H x 17"W x 13"D
Power	120VAC, 60 Hz or 240VAC, 60 Hz
Fuse	3A MDL
Dimensions	8.5"W x 8.5"H X 6"D
Weight	4 lbs



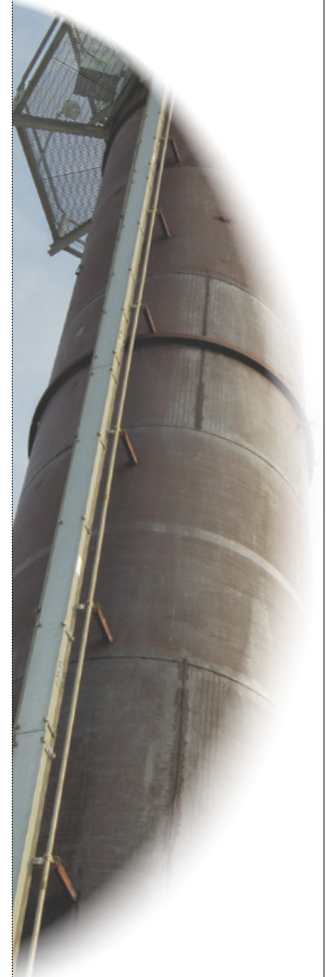
Additional controllers or displays are available depending on sampling system design



Controller interfaces can include 4-20 mA, temperature alarm contact closure or RS-422



Robust industrial design brings reliability and performance



A Name You Can Trust

Since 1995, AMP-Cherokee has been providing high performance, cost effective compliance and process performance monitoring solutions to industry.

Our years of experience and customer satisfaction in a variety of industrial applications is your guarantee for all your CEM systems and service needs.