



### The AMP-Cherokee Advantage

AMP-Cherokee provides the most comprehensive range of CEMS resources for today's emissions monitoring customer. From system design and integration to turnkey installation, commissioning, maintenance, testing and warranty support, AMP-Cherokee is a single resource for all your CEMS requirements.

### CEMS Design, Integration & Installation

AMP-Cherokee provides CEMS solutions that are ideally suited for utilities, boilers, FGD performance, SCR-NOx control, furnaces, gas turbines, process heaters, incinerators, and process controls. In addition to traditional CEMS designed for maximum reliability and minimal maintenance, AMP-Cherokee can also accurately quantify exotic compounds through in-situ or extractive FTIR systems. AMP-Cherokee's compact Mini-CEMS® is designed for emissions monitoring and process measurement applications at MACT sources.

### CEMS Field Services

Our Field Services Group provides on-site preventative maintenance and repairs for AMP-Cherokee and other vendors' installed CEMS. An AMP-Cherokee field service contract is a cost-effective solution to help ensure that process operations do not have to be suspended or operated in violation of emissions monitoring requirements due to a malfunctioning CEMS.

AMP-Cherokee is a single source for our customers' CEMS and stack testing needs. We can coordinate all aspects of your emissions compliance program for uninterrupted service and performance.

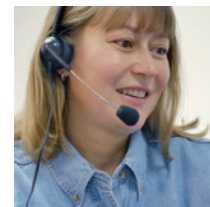
### Air Quality Consulting

As your full service air quality consultant, AMP-Cherokee can handle your regulatory requirements from start to finish. We provide:

- QA/QC Plans
- Preventative Maintenance
- CEMS Consulting
- Operator Training

### CEMS Rental Test Equipment

AMP-Cherokee maintains an inventory of over \$2 million in CEMS rental test equipment. Our QuickShip rental fleet is managed by a veteran staff that fully understands your equipment needs and will help you assemble the materials and instrumentation to ensure the successful completion of each project.



### AMP-Cherokee: The Company You Can Trust

Our expertise in air emissions monitoring enables us to work with a wide variety of clients, providing the right solutions and services for almost any industry. From oil refineries to steel mills, paper plants to bulk/specialty chemical manufacturers, glass refractories to pharmaceutical producers, AMP-Cherokee can make your regulatory program a success.

Call us at **800.399.4236** from 8am - 5pm (Eastern) to discuss your compliance objectives and discover the advantages of AMP-Cherokee's emissions monitoring products and services.



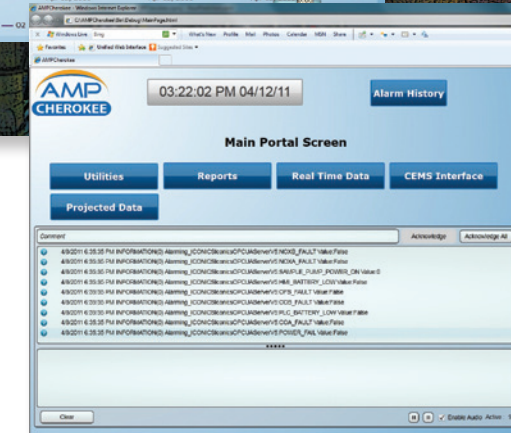
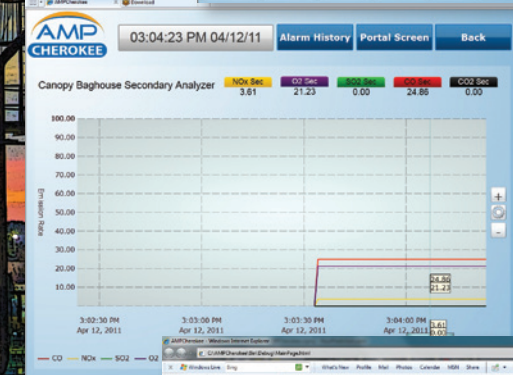
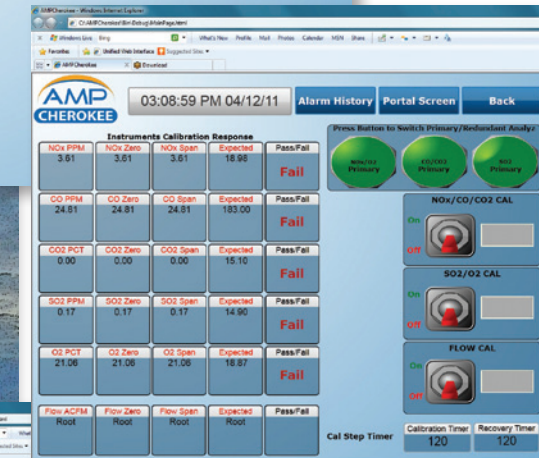
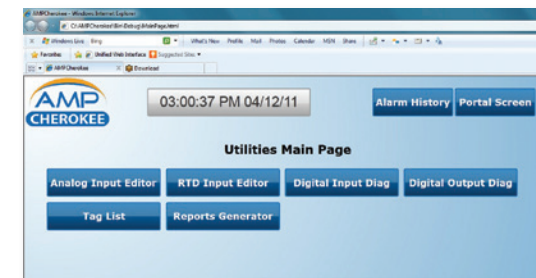
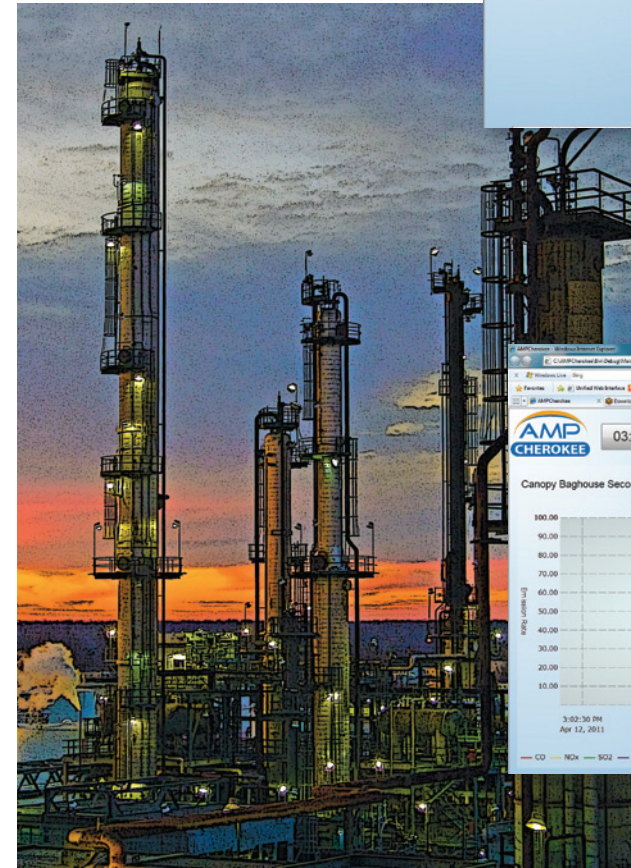
100 Logan Court | Angier, NC 27501

**800.399.4236**

[www.ampcherokee.com](http://www.ampcherokee.com)

Raleigh | Knoxville | Fort Smith

Microsoft SQL Server® is a registered trademark of Microsoft Corporation  
Allen-Bradley™ is a registered trademark of Rockwell Automation  
©2014 AMP-Cherokee All Rights Reserved 09141



# DAS Pro-Logix 60™

HMI>NETWORK DAS INTERFACE FOR COMPLIANCE AND PROCESS MEASUREMENTS





# DAS Pro-Logix 60™

Open Architecture | SCADA Ready | Network IP Data Delivery | Emissions & Process Measurements



## Allen-Bradley Ethernet/IP PLCs allow monitoring and control of your CEMS.

AMP-Cherokee's DAS Pro-Logix 60 is a self-contained, full-featured DAS package for monitoring nitrogen oxides, sulfur dioxide, carbon monoxide, carbon dioxide, oxygen and opacity -- critical measurements for emissions compliance and process measurement of gas, oil and biomass-fired sources.



## HMI>Network Interface. Microsoft® SQL Database. SCADA Drag & Drop Development.

Our open architecture DAS ProLogix 60 data acquisition and reporting software with its HMI>Network Interface™ and Allen-Bradley® PLC provides network connectivity and remote operation. DAS ProLogix 60 collects emissions and process data and stores it in a Microsoft® SQL database.



AMP-Cherokee's unique HMI>Network Interface™ provides distribution of data and reports to the client network.

## Onboard Data Redundancy.

DAS Pro-Logix 60 provides two levels of data redundancy. Data is continuously stored to both the onboard PLC and panel PC before it is sent to the client network. In the event of a loss of communication with the client network, data continues to be stored at the Panel PC. When communications are reestablished, any data gaps are automatically updated on the client network.



## Initiate Cals. Trend Data. Real Time & Historical Displays.

DAS Pro-Logix 60 provides customizable screen displays for monitoring emissions and process parameters. Initiate calibrations and perform other functions remotely.

## Automated Full Compliance Reporting Suite

Pro-Logix Reporting Suite provides full Part 60 compliance reporting, including daily calibrations, emissions reporting, and rolling averages.

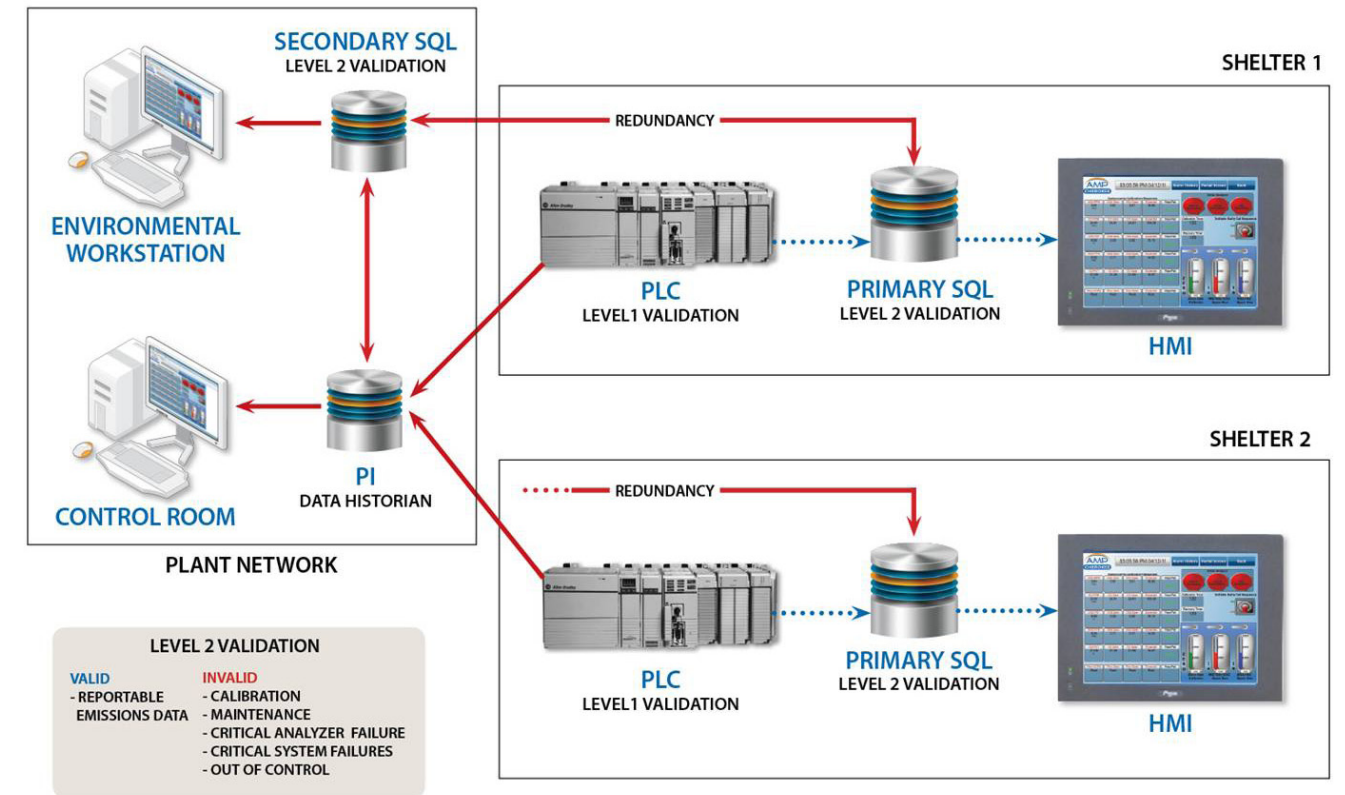
Addressable locations on your network can be assigned to receive current status, scheduled reports and system alarms. Alarm utilities can be set to alert plant personnel via email -- on or off the network.

## CEMS Remote Operation. Alarms and Notification.

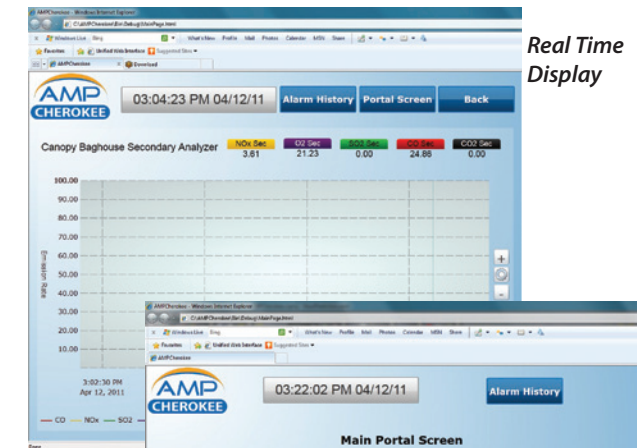
DAS Pro-Logix 60 controls operations and monitors the health status of your CEMS. Critical and noncritical email alarms can be configured to send across your monitoring network. Remote access provides administration level operations, as well as troubleshooting to locate CEMS faults.



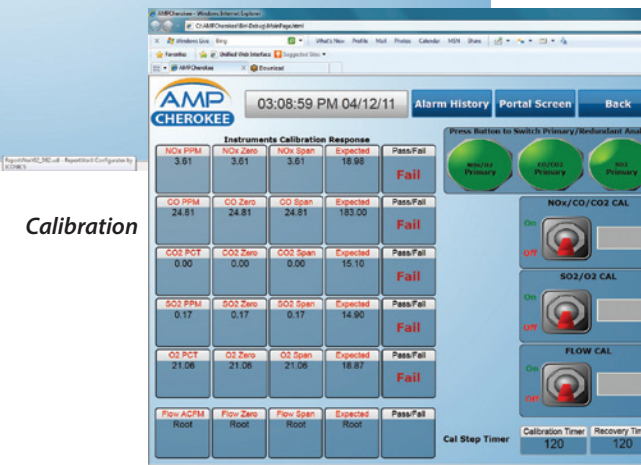
## DAS Pro-Logix 60 HMI>Network Interface



HMI Navigation



Real Time Display



Calibration

Reporting & Alarms